

Milliken Obex[®] Atrium Plus[™]

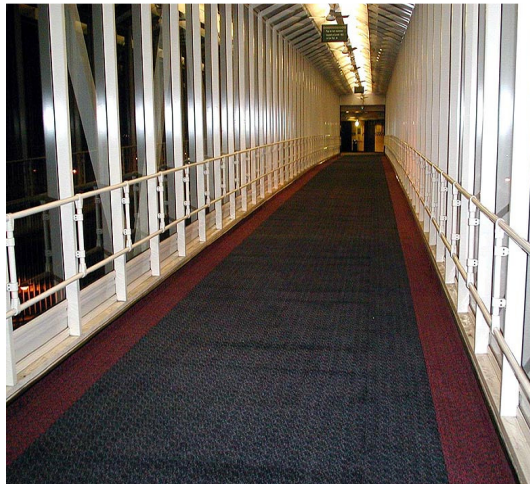
Technical Specification:

Yarn Composition: 100% Polyamide 6.6 - Mono & Multi filaments
Yarn Count: 5980 Dtex

Pile Construction: Cut Pile
Tuft Method: Straight Stitch
Pile Height: 6.75mm
Light Fastness: Xenotest ISO 105-B01:
>6 on Blue scale
Total Weight: 3575g/m²
Total Thickness: 8mm

Secondary Backing:
Composition: 100% nitrile
Backing Thickness: 2mm

Performance:
Fire Resistance classification: EN ISO 13501: C_{FL}-s1
Wear Resistance: 66,000 cycles Vetterman Test
Electrical Behaviour: Antistatic (EN ISO 14041)



N10 General Fixtures/Furnishings/Equipment 300 Entrance Matting

Product: Milliken Obex[®] Atrium[™] 9mm secondary entrance matting carpet in Ammonite *, Twilight *, Ash *, Volcano *, Bark *, Fern *, Sand *, Lagoon * to suit matwell size:.....

Supplied and installed if required by Syncros Entrance Matting Systems, Triumph Way, Kempston, Beds, MK42 7QB, and Tel. 01234 314314 / Fax 01234 314306 / E-mail: sales@syncros.co.uk in accordance with the manufacturer's installation details.