
Smart Step Loop

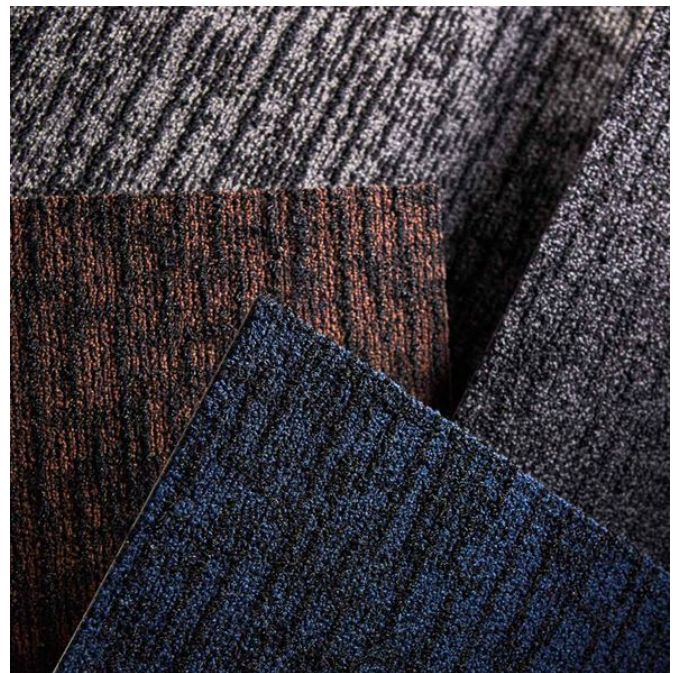
INTRALink² is a heavy duty, interlocking tile system with outstanding eco credentials. Made from 100% ECONYL[®] yarn and 100% Recycled PVC carrier.

Smart Step Loop - Secondary Matting

Smart Step is an exceptionally versatile 50cm x 50cm modular secondary entrance matting system that creates a stunning first impression in spaces that need to create an effective barrier against the elements.

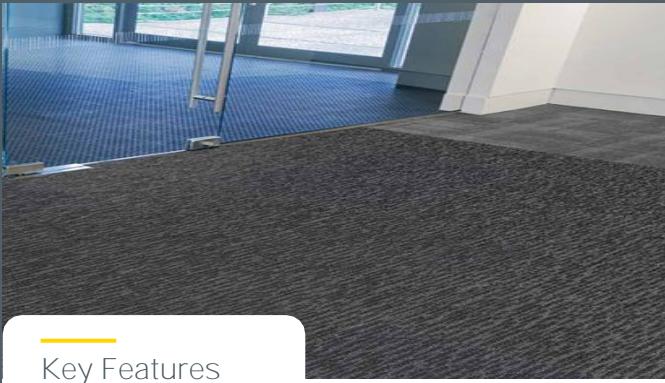
Designed to provide a superior combination of performance and aesthetics, the ECONYL[®] dual-fibre loop polyamide yarn construction will stop dirt and moisture at the door, while allowing easy removal during maintenance.

The tiles are supplied in 50cm x 50cm size and in a 9.9mm gauge with each box containing 12 tiles which assemble to 3m².



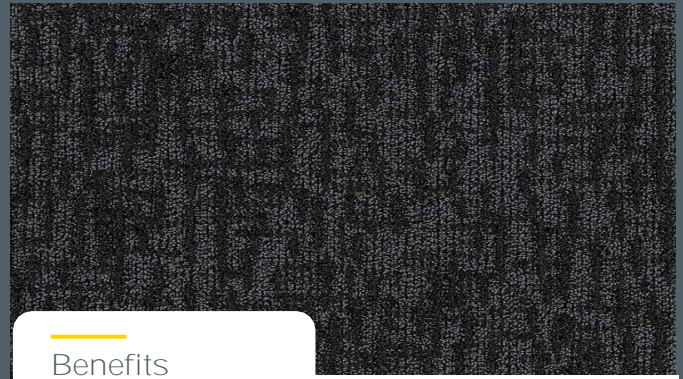
For further information please contact us on:

United Kingdom : 01234 314314 | sales@syncros.co.uk | www.syncros.co.uk
Syncros, 19 Triumph Way, Woburn Road Industrial Estate, Kempston, Bedford, MK42 7QB



Key Features

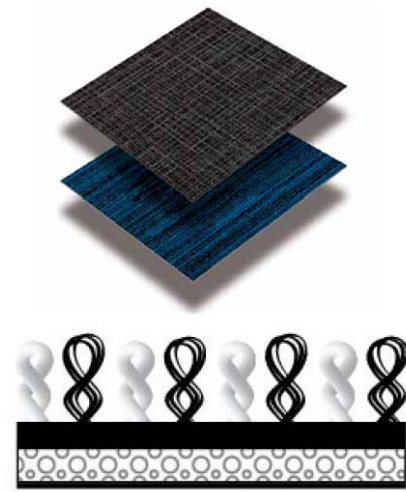
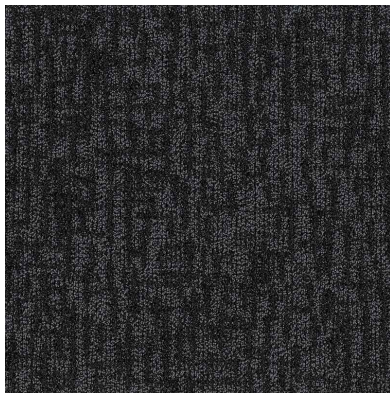
- Modular Primary Entrance Matting
- 100% ECONYL® yarn
- Backing = 100% PVC Free
- Fire Classification = Cfl s1
- Available in 9.9mm
- Multi Directional



Benefits

- Surface Mounted or in a mat well
- Easy Installation - Safety Knife
- In Stock in Dark Grey
- Same day collection / Next Day Delivery
- Install option by Syncros In-House Fitting team
- Easy Installation - Safety Knife

Colour Option - Dark Grey held in stock



Loop-Pile Construction

Product Specifications

MODULAR TILE

Construction
Tufted, Multi-Level Loop

Tile Size
50 cm x 50 cm

Textile Yarn Type
ECONYL® Type 6 and Monofilament

Dye Method
Solution-Dyed

Nominal Tufted Face Weight
946 g/m²

Gauge
1/12

Stitches Per Centimeter
28.70

Tufts
2,100/100 cm²

Nominal Pile Height
6.48 mm

Nominal Total Thickness
9.9 mm

Nominal Total Weight
3,540 g/m²

Backing Type
PVC-Free WellBAC™ Comfort Cushion (Available with TractionBack®)

Recycled Content by Total Weight
33.3% Pre-Consumer
6.6% Post-Consumer

Flammability (Radiant Panel)
ASTM-E-648
≥0.45 (Class I)

Smoke Density (NPA-258-T or ASTM-E-662)
≤ 450

Methamine Pill Test (CPSC FF-1-70) or ASTM D 2859
Self-Extinguishing

Lightfastness (AATCC 16E)
≥ 4.0 at 80 Hours

Crocking (AATCC 165)
≥ 4.0 Wet or Dry

Static Electricity (AATCC-134)
20% R.H., 21°C
≤ 3.5 KV, Permanent Conductive Fibre

Recommended Maintenance
Daily Vacuuming and Quarterly Hot Water Extraction

Indoor Air Quality —
CRI Green Label Plus™
GLP.793, Carpet Category 5Y

Recommended Installation Method(s)
Monolithic, Quarter-Turn, Ashlar

12 Tiles per box (3m²)

For further information please contact us on:

United Kingdom : 01234 314314 | sales@syncros.co.uk | www.syncros.co.uk

Syncros, 19 Triumph Way, Woburn Road Industrial Estate, Kempston, Bedford, MK42 7QB

Syncros
Entrance matting systems