

## INTRALink<sup>2</sup>

INTRALink<sup>2</sup> is a heavy duty, interlocking tile system with outstanding eco credentials. Made from 100% ECONYL<sup>®</sup> yarn and 100% Recycled PVC carrier.

### INTRALink<sup>2</sup>

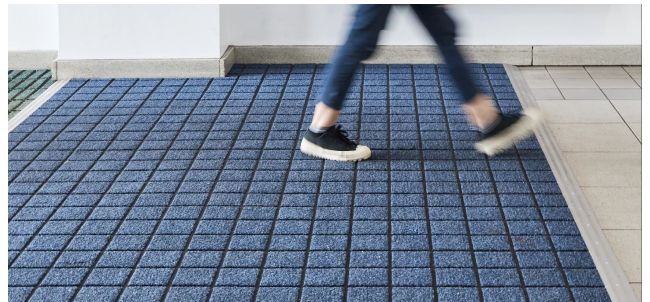
INTRALink<sup>2</sup> is a cost-effective, closed construction entrance matting system made from 250mm x 250mm modular tiles.

This stunning product offers **excellent durability and performance** even under high point loading which makes it ideal for use in high traffic areas. The INTRALux Elite secondary sheet matting is available to compliment in the same colour to further extend a matwell or you can surface mount either product.

INTRALink<sup>2</sup> outstanding eco credentials are provided by the 100% Econyl textile and 100% Recycled PVC carrier making it one of the best in class in entrance matting.

Syncros stock the INTRALink<sup>2</sup> in the most popular Anthracite 607 colour however the product is available to order in a variety of colors and with Logo inset too.

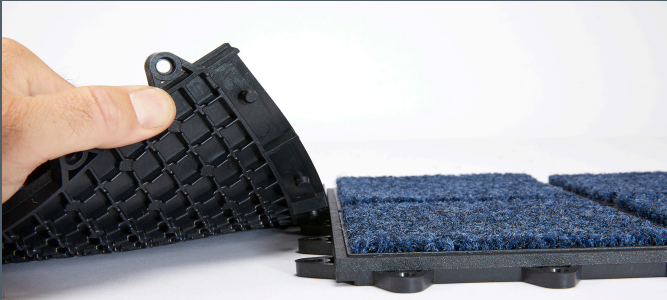
INTRALink<sup>2</sup> is engineered to be a true multi directional entrance matting which enables mat-wells which multiply access doors to be catered for effectively.



For further information please contact us on:

United Kingdom : 01234 314314 | [sales@syncros.co.uk](mailto:sales@syncros.co.uk) | [www.syncros.co.uk](http://www.syncros.co.uk)

Syncros, 19 Triumph Way, Woburn Road Industrial Estate, Kempston, Bedford, MK42 7QB



### Key Features

- Modular Primary Entrance Matting
- 100% ECONYL® yarn
- 100% Recycled PVC Carrier
- 5 Year Guarantee
- Available in 12mm
- Multi Directional



### Benefits

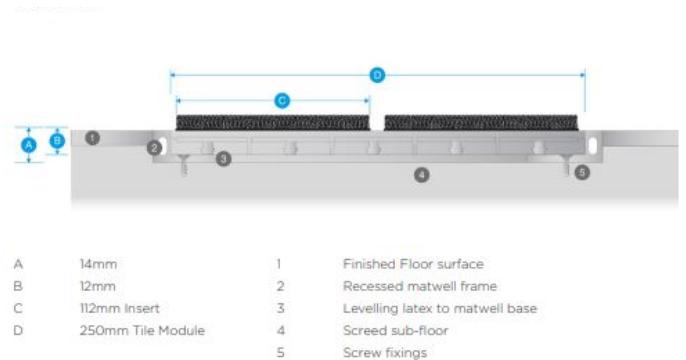
- Surface Mounted or in a mat well
- Easy Installation - Safety Knife
- In Stock in Anthracite 607
- Same day collection / Next Day Delivery
- Logo or mix coloured designs
- Install option by Syncros In-House Fitting team

## Colour Options - Anthracite 607 held in stock



### Product Specifications

<b>Weight</b>	10.7kg/m <sup>2</sup>
<b>Matwell Framing</b>	INT014 / INTR012
<b>Slip Rating</b>	Will vary with insert, in excess of PTV 38
<b>Warranty</b>	5 years
<b>Uniclass 2015</b>	Pr_35_57_11_26 Entrance Mats
<b>CAWS</b>	N10 / 300 Entrance Matting



For further information please contact us on:

United Kingdom : 01234 314314 | [sales@syncros.co.uk](mailto:sales@syncros.co.uk) | [www.syncros.co.uk](http://www.syncros.co.uk)

Syncros, 19 Triumph Way, Woburn Road Industrial Estate, Kempston, Bedford, MK42 7QB

