

Forbo Coral Click

Coral Click is an exceptionally versatile modular entrance matting system that can be assembled on site. The interlocking mechanism is simply 'clicked' together using a rubber hammer.

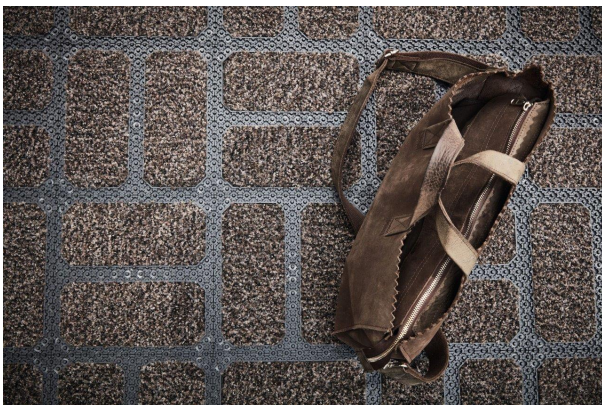
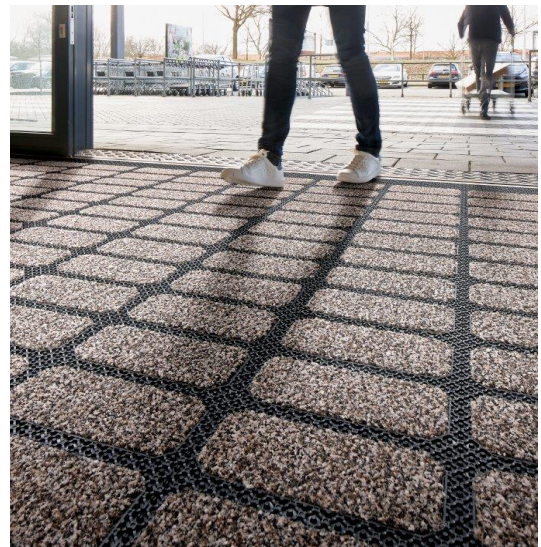
Forbo Coral Click

Forbo Coral Click tiles are supplied in 24 x 24cm connectable tiles formats. Each box contains 24 tiles, sufficient to cover an area of 1.37m².

Syncros stock the Coral Click in the most popular **Hurricane Grey** & **Vulcan Black** colours, on a same day collection or next day delivery basis or alternative or a supply & fit option via the Syncros in-house fitting team.

Five of the most popular Coral Brush colours are offered as standard inserts. In addition, a plain PVC tile (7828/7838) is offered which can be used as perimeter fill-in for matwells, or as the initial matting (internal use only), where it will remove coarse dirt from the soles of shoes.

Coral Click is a multi directional entrance matting which is easy to fit with a safety knife and falls into the 'Mat in a Box' range of entrance matting systems.



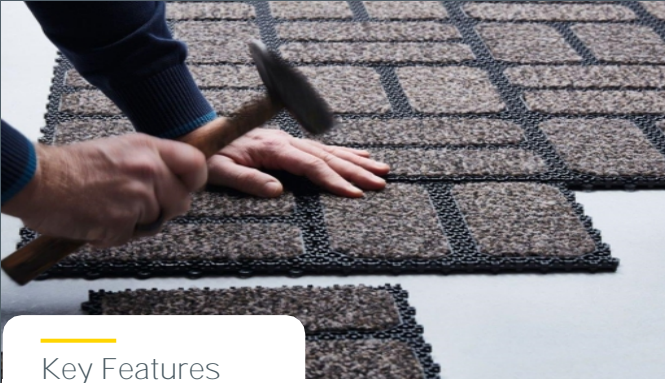
ECONYL
100% Regenerated Nylon



For further information please contact us on:

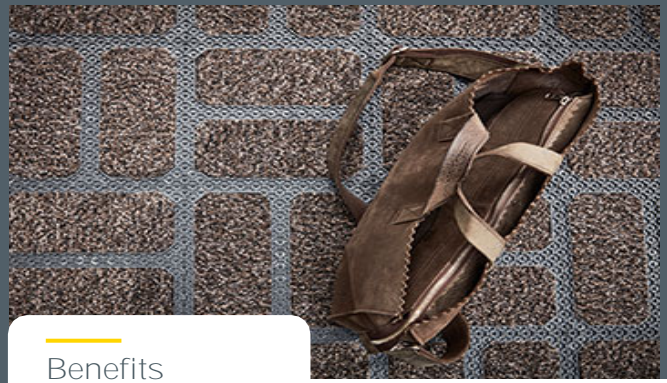
United Kingdom : 01234 314314 | sales@syncros.co.uk | www.syncros.co.uk

Syncros, 19 Triumph Way, Woburn Road Industrial Estate, Kempston, Bedford, MK42 7QB



Key Features

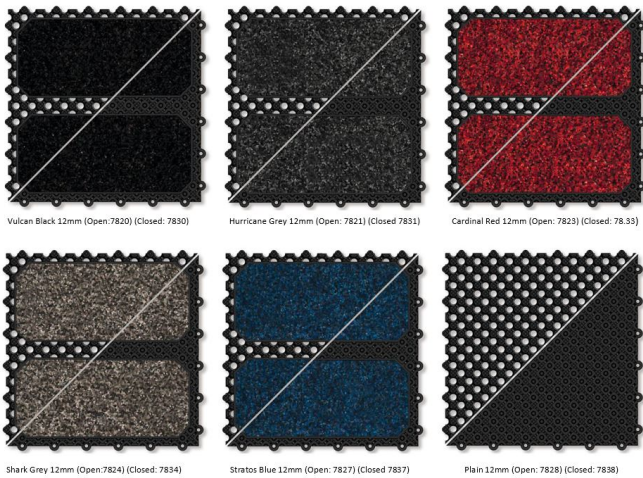
- Modular Primary Entrance Matting
- 100% ECONYL® yarn
- 5 Year Guarantee
- Available in 12mm
- Multi Directional



Benefits

- Surface Mounted or in a mat well
- Easy Installation - Safety Knife
- In Stock in Hurricane Grey & Vulcan Black
- Same day collection / Next Day Delivery
- Logo or mix coloured designs
- Install option by Syncros In-House Fitting team

Colour Options



Product Specifications

Resistance dynamic load (kg) [40,000 passes]	200*
Resistance static load (kg/sqcm)	50
Fire classification	EN ISO 13501-1 B _s s1
Slip safety (BS 7976-2)	'Low risk'
Temperature resistance	-30° <-> +50° Celsius
% of surface that is textile	70%
Standard available colours	5714 - 5721 - 5723 - 5727 - 5730
Coral Brush	
Textile pile material	100% regenerated ECONYL® Nylon

Textile manufacturing method	Tufted, 5/32" cut-pile
Textile tuft base	Non-woven polyester
Textile light fastness	EN ISO 105/B02 >5
Textile rubbing fastness	EN ISO 105/X12 5
Textile water fastness	EN ISO 105/E01 4 - 5
Textile sea water fastness	EN ISO 105/E02 4 - 5
Textile water stains fastness	EN 1307 - G 5
Textile shampoo fastness	BS 1006 4 - 5
Textile organic solvents fastness	EN ISO 105/X05 4 - 5

For further information please contact us on:

United Kingdom : 01234 314314 | sales@syncros.co.uk | www.syncros.co.uk

Syncros, 19 Triumph Way, Woburn Road Industrial Estate, Kempston, Bedford, MK42 7QB

Syncros
Entrance matting systems